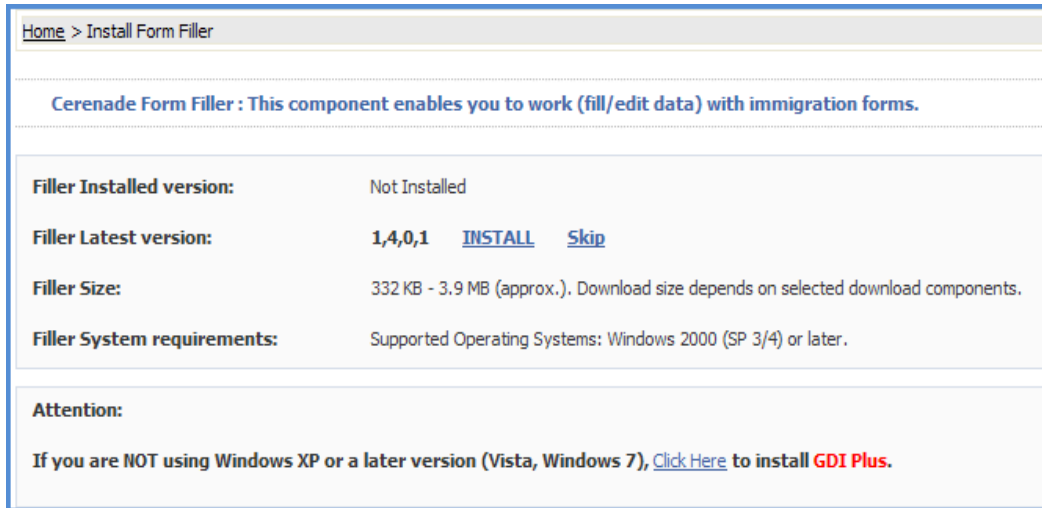


HOW TO INSTALL CERENADE FORM FILLER

When you login to **Eimmigration** and you see the following advisory screen, this means that Cerenade Form Filler is not installed properly or is not installed and needs to be installed.



Home > Install Form Filler

Cerenade Form Filler : This component enables you to work (fill/edit data) with immigration forms.

Filler Installed version:	Not Installed
Filler Latest version:	1,4,0,1 INSTALL Skip
Filler Size:	332 KB - 3.9 MB (approx.). Download size depends on selected download components.
Filler System requirements:	Supported Operating Systems: Windows 2000 (SP 3/4) or later.

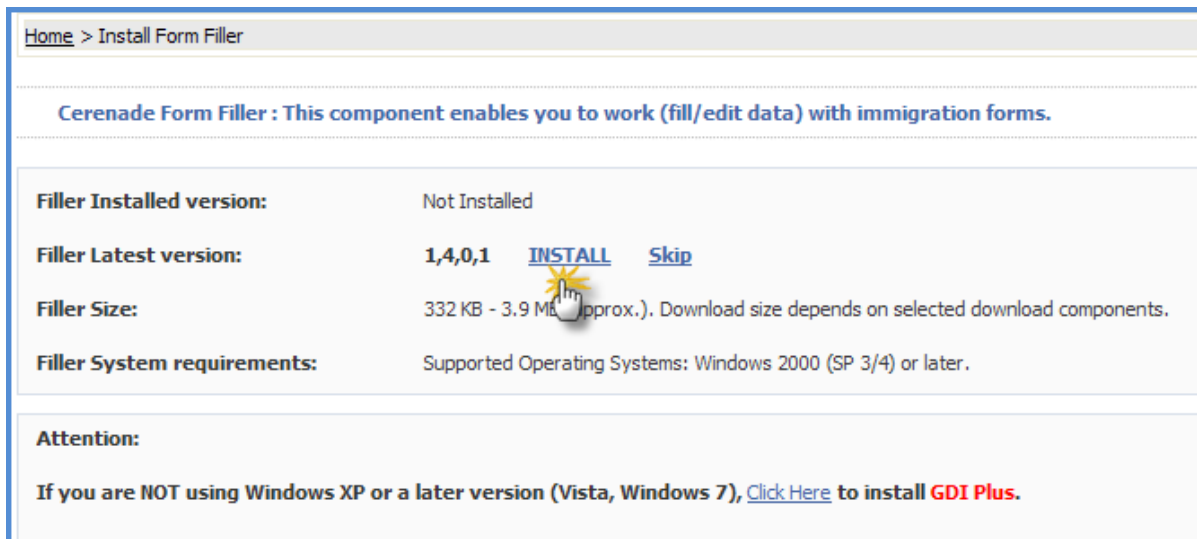
Attention:

If you are NOT using Windows XP or a later version (Vista, Windows 7), [Click Here](#) to install **GDI Plus**.

ATTENTION: If you are NOT using Windows XP or a later version (Vista, Windows 7), you need to download and install **GDI Plus** component. Click on the below link for instructions on how to install GDI Plus.

<http://www.cerenade.com/eimmigration/InstallGDIPlusComponent.pdf>

1) Click where it reads, **INSTALL**.



Home > Install Form Filler

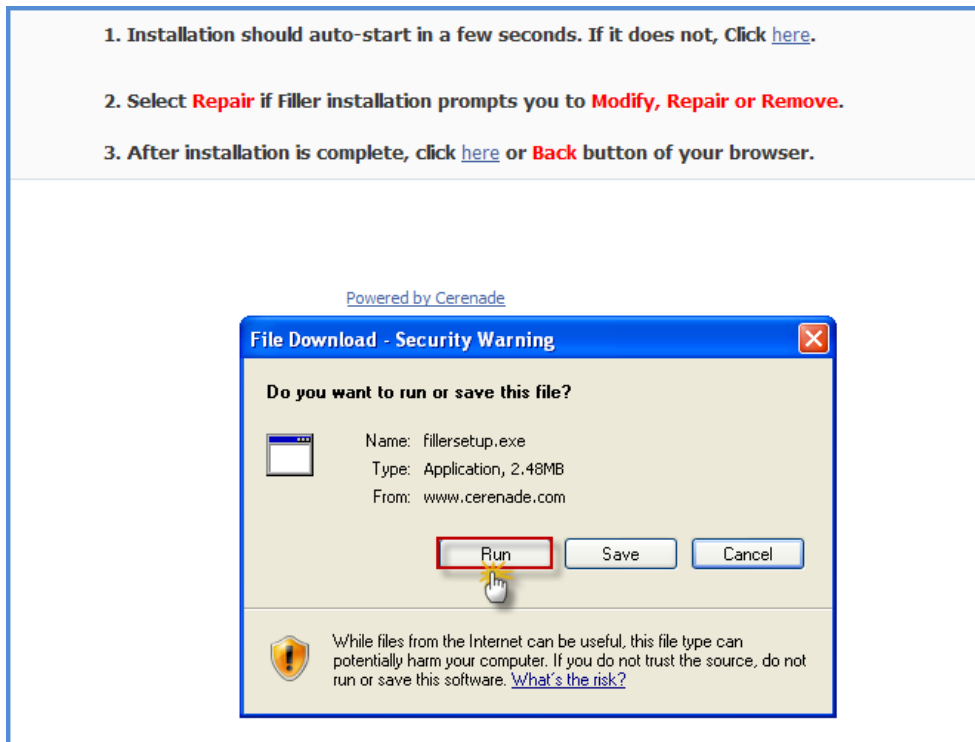
Cerenade Form Filler : This component enables you to work (fill/edit data) with immigration forms.

Filler Installed version:	Not Installed
Filler Latest version:	1,4,0,1 INSTALL Skip
Filler Size:	332 KB - 3.9 MB (approx.). Download size depends on selected download components.
Filler System requirements:	Supported Operating Systems: Windows 2000 (SP 3/4) or later.

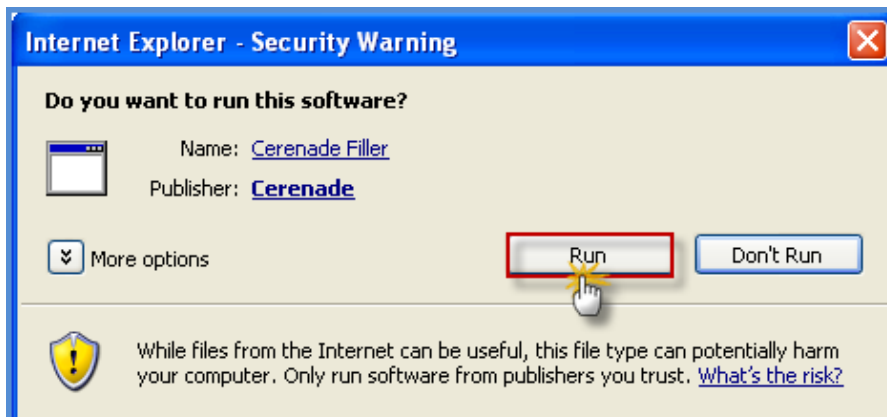
Attention:

If you are NOT using Windows XP or a later version (Vista, Windows 7), [Click Here](#) to install **GDI Plus**.

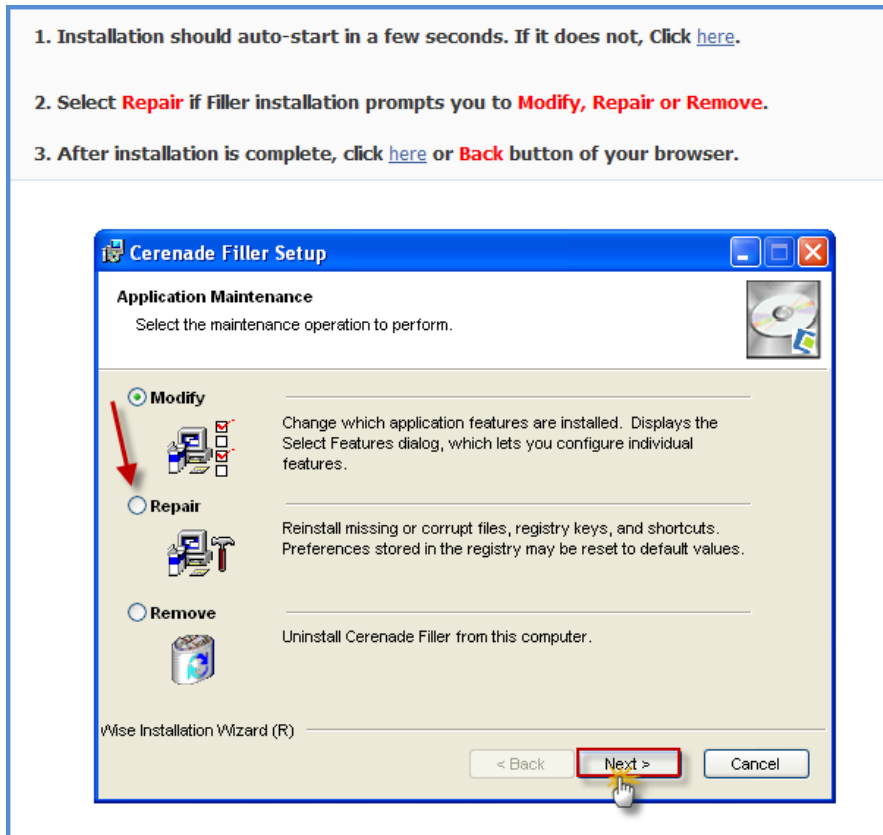
2) Click on **Run** button.



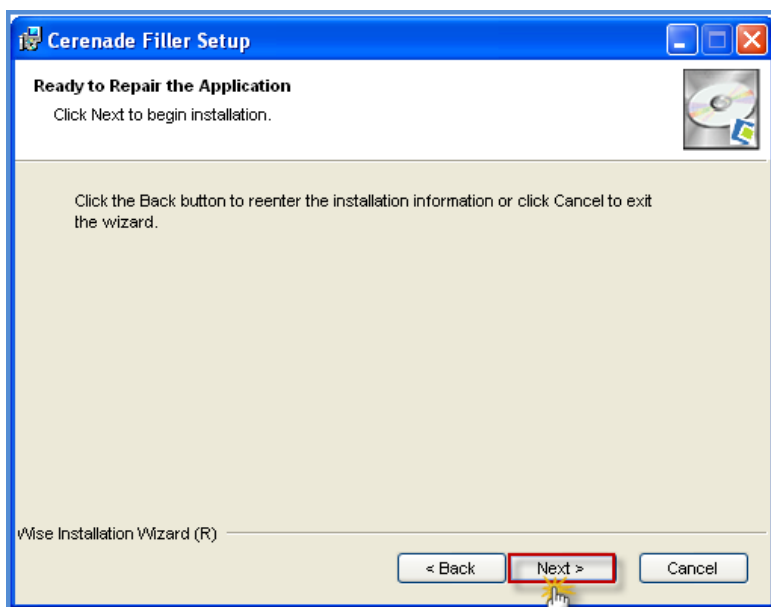
3) Click on **Run** button.



4) If you get the **Cerenade Filler Setup** window, select **Repair** then click **Next**.



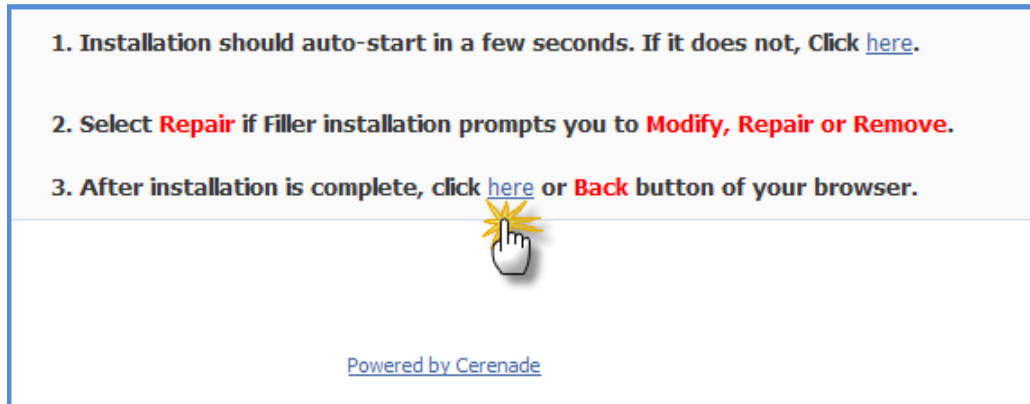
5) Click on **Next** button



6) Click on **Finish** button.



7) On step 3, click where it reads **click here or Back button of your browser.**



Related Articles:

How to install GDI Plus component:

http://www.cerenade.com/eimmigration/How_To_Install_Cerenade_Form_Filler.pdf

How to configure Internet Explorer security settings:

http://www.cerenade.com/eimmigration/Configuring_Internet_Explorer_Browser_Security_Settings_for_EIMMIGRATION.pdf

For more information and articles, please visit www.eimmigration.com